
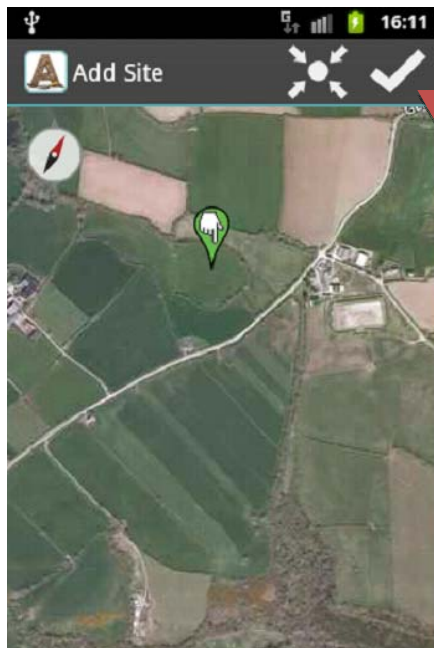
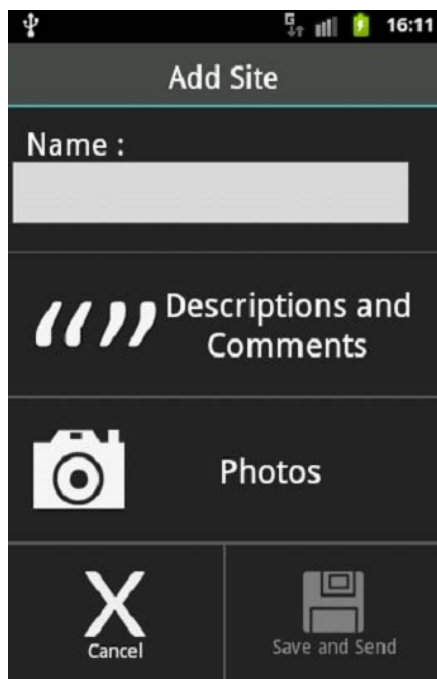


## Sending us information: New sites

 Tap this icon to propose a new archaeological site record. The first time you do this you will be taken through some brief instructions. You will also need to register (see 'Options' below). The Welsh Archaeological Trusts will not pass on your information to third parties. Registration details will only be used to contact users if verification of new information is needed or to investigate any misuse of the Archwilio app.



The first step in adding a new site is to long press the map at the position of the site's location until a new map marker appears. Having done this, tap the tick.



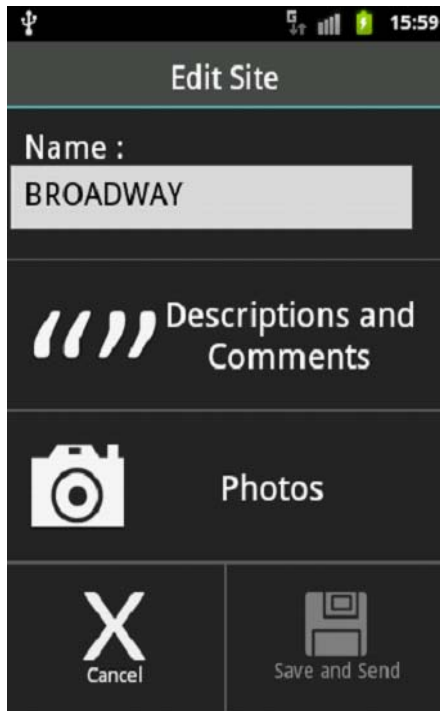
The Add Site screen

Here you give the site a name, write some details, take a photo of the site and send it to us. Once the information is verified the site will be available to view via Archwilio and the Archwilio app.

## Sending us information: Existing sites



Tap this to send us information about an existing site. It is found on the Description screen for each site. The first time you do this you will be taken through some brief instructions. You will also need to register (see 'Options' below). The Welsh Archaeological Trusts will not pass on your information to third parties. Registration details will only be used to contact users if verification of new information is needed or to investigate any misuse of the Archwilio app.



The Edit Site screen

From here you can send us comments about the site along with a photograph of it. Once verified the information will be available via Archwilio and the Archwilio app.